

PIMA



Wireless 2-Way Curtain Detector

Model:
DPC743 / DPC786

Introduction and Features

The Wireless Curtain PIR is a stylish wall mounted passive infrared detector.

- Selectable range up to 6m
- Integral 90° bracket – can be mounted either side of the window
- Easy battery replacement

Enrolling the Detector into the System

For complete description of the wireless configuration and device enrollments, refer to Programming Guide for the FORCE and VISION Alarm Systems

Enrollment of the detector in the system can be performed manually or automatically via the keypad.

Auto Enrolling (using RF Communication):

1. Enter Installer menu, and select:
System Configuration > Peripherals > Wireless Peripherals > Enroll and delete > Detectors > Enroll > Auto Enrollment
2. Insert the batteries and close the bracket
3. In 3 seconds the detector will send an Enrollment message. The serial number should appear on the keypad.
4. Select Enroll and press ↵.

Manual Enrolling:

1. Enter Installer menu, and select:
System Configuration > Peripherals > Wireless Peripherals > Enroll and delete > Detectors > Enroll > Manual Enrollment
2. Enter the serial number and press ↵.
3. Select Enroll and press ↵.

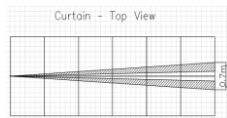
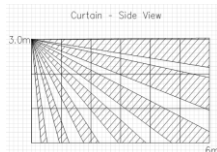
Enrolling through the Force Manager Software:

You can enroll the detector using Force Manager software; For information refer to the Force Manager Manual.

Caution: Risk of explosion if battery is replaced by an incorrect type. Dispose of used batteries according to local regulation.

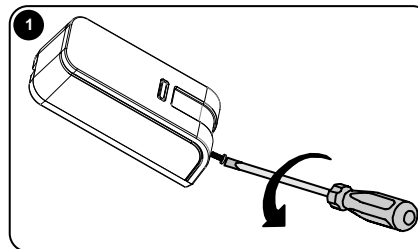
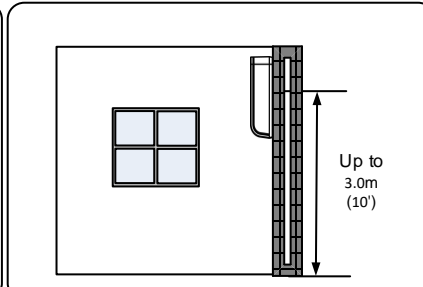
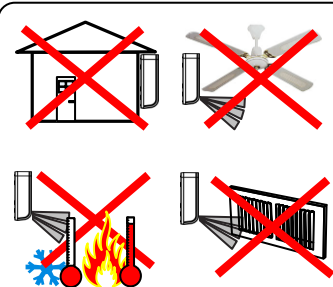
LED Display

LED	State	Description
Red	On	Alarm
	Flashing	Low battery



- 8µA standby
- 868.65MHz
433.92MHz
- 15/65 min. 1-Way (868/433MHz)
0-255 min. 2-Way
- = 3 years typical
3V, 1450mAh Lithium Battery
Type CR123A
Low voltage threshold: 2.6V
Power Output 10mW
- 31.5 mm (1.2")
35mm (1.4")
98.5 mm (3.9")
- 10° C to 55° C
(14° F to 131° F)
75% average relative humidity
- 110 gr.
EN50131-2-2 G2, EC2,
PD6662:2017

- 1 x Battery
- 3 x Screws
- 1 x Key



Ordering Information

Model	Frequency	P/N
DPC743	433MHz	8841214
DPC786	868MHz	8841215

UKCA and CE RED Compliance Statement

Hereby, PIMA declares that this equipment is in compliance with the essential requirements of the UKCA Radio Equipment Regulations 2017 and CE Directive 2014/53/EU.

For the UKCA and CE Declaration of Conformity please refer to our website: www.pima-alarms.com

Limited Warranty

PIMA Electronic Systems Ltd. does not represent that its product may not be compromised and/or circumvented, or that the Product will prevent any death, personal and/or bodily injury and/or damage to property resulting from burglary, robbery, fire or otherwise, or that the Product will in all cases provide adequate warning or protection. The User understands that a properly installed and maintained equipment may only reduce the risk of events such as burglary, robbery, and fire without warning, but it is not insurance or a guarantee that such will not occur or that there will be no death, personal damage and/or damage to property as a result.

Read this guide in its entirety before attempting to program or operate your system. Should you misunderstand any part of this guide, please contact the supplier or installer of this system. Copyright © 2022 PIMA Electronic Systems Ltd. All rights reserved. E&OE

Contacting PIMA

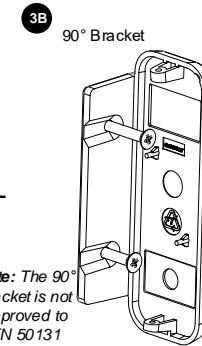
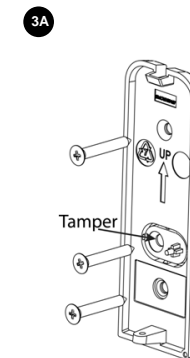
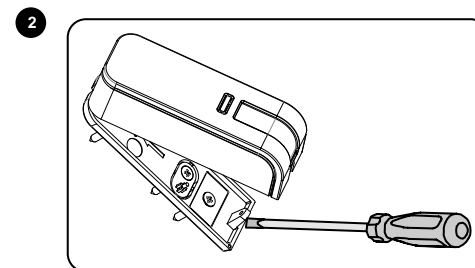
PIMA Electronic Systems Ltd.
www.pima-alarms.com
5, Hatzoref Street, Holon 5885633, Israel
Tel: +972.3.6506414
Fax: +972.3.5500442
Email: support@pima-alarms.com



© PIMA 5/2022 4412985-A

5IN2985-A

Scan for technical documentation



- OR -

Note: The 90° bracket is not approved to EN 50131

