

FORCE SERIES

Bringing Security to
a New Level



Powered by  PIMAlink 3.0

The *FORCE Series* includes *FORCE*, PIMA's revolutionary professional hybrid alarm system, *FORCE Lite*, a cost effective version designed to provide a solution where connectivity through a PSTN dialer is not required, *FORCE 32/FORCE 32C* and *FORCE 16*, economic systems for private houses and small businesses.

Top Level Security

The *FORCE Series* sets new standards in the security field.

To enable top-level security, The *FORCE Series* features AES, 128 bit encryption for all IP communication. Security is further enhanced by assigning separate access codes to installers and CMS, enabling seamless system connection to the CMS at any point regardless of the installer code. Additional security features include advanced options, such as the ability to limit user authorizations to perform only specific operations, granting remote technician access based on approval of the system's user, and time-limited zone bypassing.

Easy to Install, Configure, and Use

Equipped with a unique combination of tools and features, The *FORCE Series* is designed to make installation incredibly easy for CMS and installers: Power Diagnostics provide a real-time display of panel and peripherals' current consumption, as well as voltage levels. Systems can be safely configured remotely via secure IP. Meanwhile, for remote controlling their system, end-users enjoy the extremely fast pairing to the PIMAlink 3.0 Cloud and smartphone app. State-of-the art equipment includes a large, 7-line LCD keypad with on-board help screens for intuitive and rapid installation.

Ultimate Scalability

The *FORCE Series* various systems offer a solution for residential and commercial facilities of all sizes: *FORCE*, with eight security zones onboard, is easily scalable to 144 zones and up to 144 users. *FORCE Lite*, with eight security zones onboard, is easily scalable to 64 zones and up to 64 users. *FORCE 32/FORCE 32C* offer 8 onboard zones and can expand to 32 zones and *FORCE 16* is an affordable system offering 8-16 zones.



Unique Features for Ultimate Advantages

Application

Whether you're searching for a security solution for a small business, office building, retail outlet, logistic center, utility, bank, or remote site, PIMA's *FORCE Series* brings you a state-of-the-art, proficient, flexible, reliable, and professional hybrid alarm systems ideal for any size or type of application.

Feature	<i>FORCE</i>	<i>FORCE Lite</i>	<i>FORCE 32/C</i>	<i>FORCE 16</i>
Total number of zones	8-144	8-64	8-32	8-16
Max. number of wireless zones	64	24	24	8
Number of keyfobs	64	64	32	64
Number of users	144	64	32	64
Number of contacts	32	16	16	16
Partitions/Keypads	16	8	4/8	8
Partial Arming modes	4	4	4	4
Graphic LCD keypad with 7 lines	√	√	√	√
Onboard network communication	√	√	-/√	√
Multipath CMS communication options	Ethernet, PSTN, cellular (2G/3G/4G), long-range radio	Ethernet, cellular (2G/3G/4G), long-range radio	PSTN, cellular (2G/3G/4G), long-range radio/Ethernet	Ethernet, cellular (2G/3G/4G), long-range radio
Cloud-based smartphone app for remote control	√	√	-/√	√
FORCE Manager for remote configuration via either Ethernet or GPRS and cloud	√	√	√	√
Separate installer & CMS codes allowing total separation between installer and CMS for maximum privacy	√	√	√	√
Help screen for every keypad menu	√	√	√	√
Remote firmware upgrade	√	√	√	√
Local diagnostics	√	√	√	√
Newly designed mounting rack	√	√	√	√
Arming Prevention in case of system fault; can be overridden	√	√	√	√
Buzzer for locating expanders	√	√	√	√
Tampers	2	1	1	1
Auxiliary current (max.)	1.1A	750mA	750mA	750mA
Sirens	2	1	1	1

A Wide Selection of Peripherals

The *FORCE Series* systems interface with a wide selection of keypads, expanders and communication modules enabling the customer to expand the system as needed. These peripherals were designed with PIMA's uncompromising quality, ease of installation, and operation experience.

Keypads



Graphic LCD Touch Keypad
(KLT500)

PIMA P/N 8415010



Graphic LCD Rubber Keypad
(KLR500)

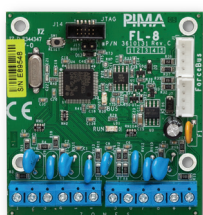
PIMA P/N 8415001



Arming Station
(KLA500)

PIMA P/N 8415020

Expanders



Local Zone Expander (ZEL508)

Local 8-zone wired expander

PIMA P/N 8500026



Wireless Expander for PIMA Peripherals (WRF143/187)

PIMA P/N
8500030 WRF143 (433.92 MHz)
8500041 WRF187 (868.95 MHz)



Outputs Expander (OEX508)

Remote 8-relay expander for controlling home appliances such as electric gates, lights, etc.

Includes a buzzer for easily identifying its location.

PIMA P/N 8500028



8-Zone Expander (ZEX508)

Remote 8-zone wired expander including 1 onboard relay

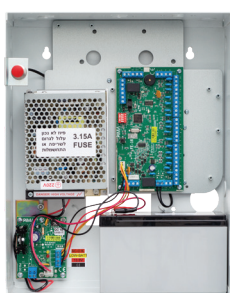
PIMA P/N 8500026

16-Zone Expander (ZEX516)

Remote 16- zone wired expander including 2 onboard relays

PIMA P/N 8500027

The above expanders include a buzzer for easily identifying their location.



16-Zone Expander + 4.2A Power Supply (ZEP716)

The expander includes indication for AC loss and low battery states.

Includes a buzzer for easily identifying its location.

PIMA P/N 82900013



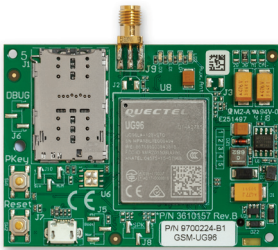
8-Zone Expander + 1.2A Power Supply (ZEP608)

The expander includes indication for AC loss and low battery states.

Includes a buzzer for easily identifying its location.

PIMA P/N 82900011

Communication Modules



Cellular Module

Supports Data, Voice and SMS channels.
Simple installation.

PIMA P/N
8300040 Single SIM 2G (GSM501)
8300043 Dual SIM 2G (GSM512)
8300045 Dual SIM 3G (CLM302)
8300049 Dual SIM 4G (CLM412)

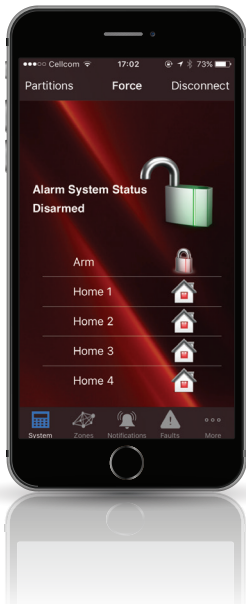


Long-Range Radio for CMS Service Users (TRU/TRV-100)

The transmitters can use 2 frequencies in the same range: UHF Low/High or VHF Low/Medium/High. The second frequency can be chosen per event type, for example, to transmit test events.

PIMA P/N
8200011 TRV-100DP L (136 to 156 MHz)
8200010 TRV-100DP H (154 to 174 MHz)
8300009 TRU-100DP M (435 to 470 MHz)
8300006 TRU-100DP H (470 to 500 MHz)

Ultimate Control with PIMALink 3.0 Smartphone App



Left home and forgot to turn on your alarm system? With PIMALink 3.0 app you can control your FORCE alarm system from anywhere.

PIMALink 3.0 is highly secured with no passwords saved on the cloud, and extremely advanced with video verification and remote look-in capabilities.

Key Features

- Highly secure Microsoft Azure-based system
- Alarm notifications filter by type (burglary, fire, etc.)
- One user can control up to 16 systems via the same app
- Various sounds assignment according to event type

PIMALink 3.0 features a variety of control options:

- Viewing System Status
- Arming/disarming the whole system or designated partitions
- Reviewing zones status
- Bypassing zones
- Reading event log
- Switching on/off a home appliance

Additional features for video verification:

- Seamless integration between Force and IPCAM/DVRs/NVRs
- Predefined link between video source to the panel's zones
- Immediate access to video cameras
- Pre- and post-alarm video stream
- Playing video clip directly from the event log
- Video recording on smartphone while streaming

Pairing the system to PIMALink 3.0 is incredibly simple!

Just take a minute to pair the alarm system to the app - no registration needed!

Step 1

On the panel User selects "Pairing to PIMALink 3.0"



Step 2

User enters the Pairing Code displayed on the panel into the smartphone app



Step 3

The App connects PIMALink 3.0 and approves the pairing



PIMA Electronic Systems Ltd. 5 Hatzoref Street, Holon, Israel 5885633
Office: +972 3 650 6414 sales@pima-alarms.com www.pima-alarms.com