

RXN-700

Graphic Keypad
for PIMA Intruder Alarm Systems

Installation Guide



PIMA's new generation RXN-700 LCD color graphic keypad offers an exciting new approach to security, based on technology, design & comfort. The RXN-700 is designed to maintain PIMA's programming expertise.

The RXN-700 keypad can be used with PIMA's Hunter-Pro Series and Captain 8 intruder alarm systems.

The RXN-700 has two installation kits: flush mount (P/N 8190025), and surface mount (P/N 8190023).



- **The RXN-700 must be powered by a 12V transformer (not included), and not by the control panel.**
- **The RXN-200 keypad cannot be used together with the RXN-700**
- **To use LED keypads together with the RXN-700, the LED keypads must be set with ID's other than zero.**

Safety instructions

- Do not install the keypad in a humid or with extreme temperature environment.
- Do not expose the screen to direct sunlight or ultraviolet radiation.

FLUSH MOUNT INSTALLATION

For flush mount installation, the RXN-700 comes with a 134X244mm plastic wall box. The box must be mounted ahead of installation.

Out of the Box

- Plastic wall box (supplied separately);
- Metal mounting plate;
- Metal decorative frame;
- 4 screws;
- Flathead screw;

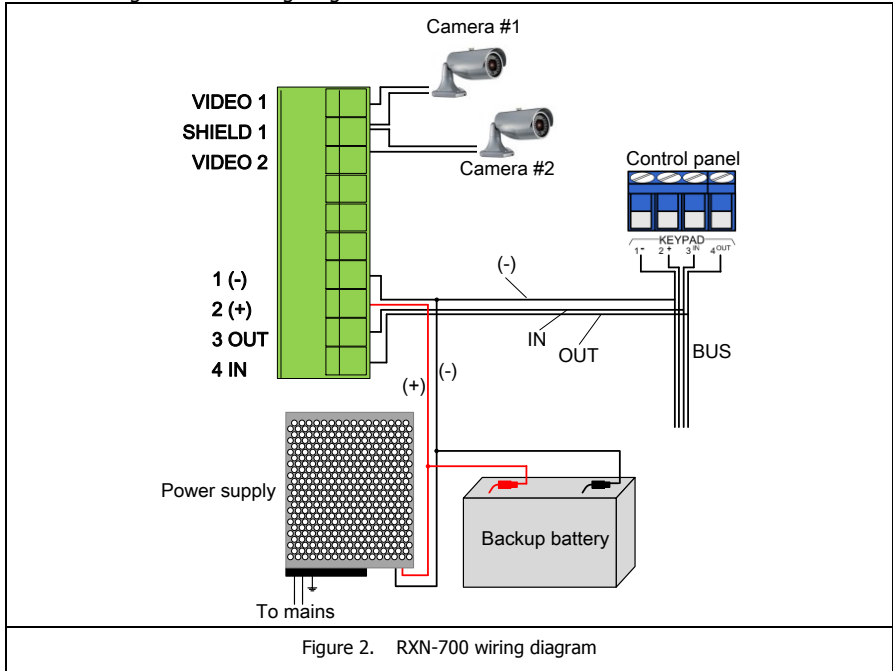


Figure 1. Wall box with knockouts

In some models, the box's 4 knockouts must be removed, before mounting the metal frame.

INSTALLATION

1. Connect the RXN-700 to the BUS wires to the keypad's terminal block female connector, according to the following diagram:



The voltage wires must be 1mm in diameter. To use 0.5mm wires, a second wire must be added to each wire, so there would be two 0.5mm wires for the (+) connection and two for the (-) one.

2. Attach the mounting plate to the RXN-700 (see the next figures): insert the fastening pin on the metal plate to the keypad's fastening pin hole at the back, and firmly push one against the other.

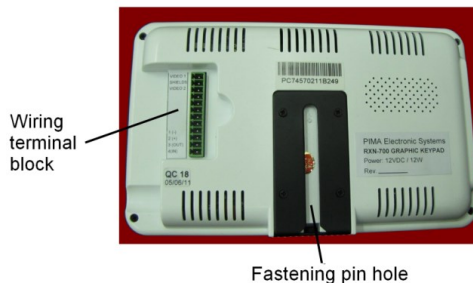


Figure 3. The RXN-700 back side

3. Tighten the flathead securing screw in its place at the bottom of the keypad.

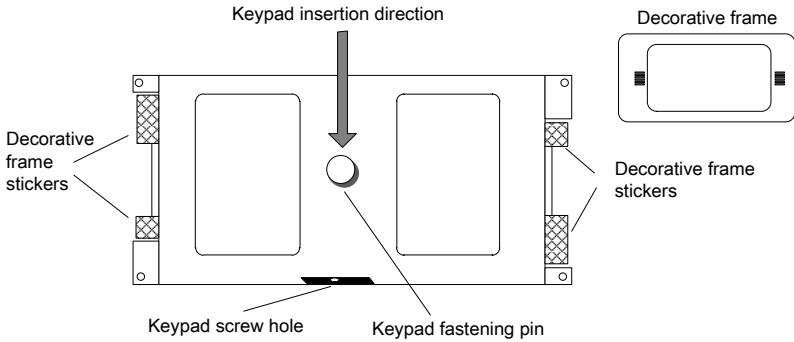


Figure 4. The metal panel

4. Insert the keypad into the wall box and secure it with the 4 supplied screws.



Figure 5. The keypad inserted into the wall box

5. Place the metal decorative frame and attach it with the Velcro fasteners.

SURFACE MOUNT INSTALLATION

For surface mounting installation, the keypad is mounted on a metal bracket. The installation kit contains the bracket with 3 screws and 3 matching wall plugs and a female connector.

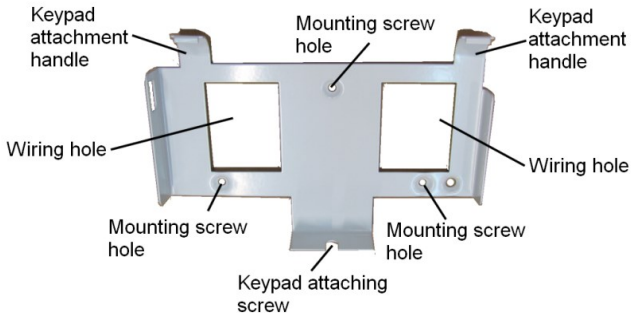


Figure 6. The surface mounting bracket

1. Drill three 4mm holes, matching the mounting screws holes on the bracket.
2. Connect the keypad's wires to the female connector. See Figure 2.
3. Pass the connector from back to front through the wiring passage.
4. Attach the bracket to the wall with the 3 screws.
5. Connect the female connector to the keypad's terminal block.
6. Attach the keypad to the bracket: forcibly push the 2 attachment handles to the 2 small holes in the keypad's top side.
7. Tighten the flathead screw so that the keypad will be attached to the bracket.

TECHNICAL SPECS

- 7 inch TFT LCD touch screen
- WinCE 5.0 OS
- A/V input
- SD Card (optional)
- 2 USB inputs
- 1 RS-232 input
- High Resolution: 800×480 (1,152,000) pixels
- Aspect ratio: 16:9
- Working Temperature: -10-65oC
- Power Supply: DC 12V
- Dimensions (mm): 188L*114W*35H
- Weight: 445g

THE SCREEN SAVER

The RXN-700 keypad includes a screensaver with two images that are exchanged constantly. The keypad displays the screensaver for one minute, about two minutes after the last click on the screen and only if no fault is displayed. After that, the screen is turned off.

The images characteristics

To add new or replace the current images, save them on a USB flash drive first.

The image characteristics:

- The images names must be "p1.jpg" and "p2.jpg", accordingly.
- The only allowed format is "jpg".
- The images size should be 800X480 pixels and up to 100KB each.

Adding new or replacing the images

1. Restart the RXN-700 (if this is the first time you use the keypad, just plug it in).
2. When the PIMA logo is displayed, click (using the keypad's plastic stick) the "Exit to Windows" button. See the green rectangle on Figure 1.



Figure 7.

3. The Windows CE desktop immediately appears. Click and hold the "My Device" icon; in the window that pops up (see the red rectangle on Figure 2), click "Open".

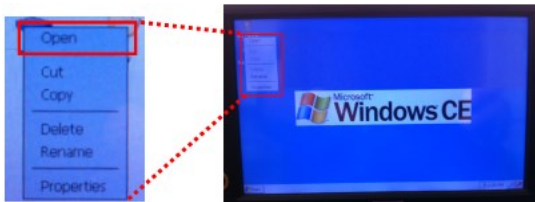


Figure 8.

4. Insert the USB drive into the USB socket, located on the upper left side of the keypad; wait for its icon to appear onscreen.
5. Click and hold the USB drive's icon ("Disk" in Figure 9); in the window that pops up, click "Open".

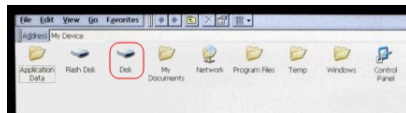


Figure 9.

6. Select the two image files with the stick and click "Edit" -> "Copy" from the menu.
7. Click the "X" button on the upper right of the screen to close the current window.
8. Click and hold the "Pima" folder; in the window that pops up, click "Open".

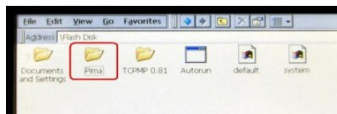


Figure 10.

- Click and hold the "Screen Saver" folder; in the window that pops up, click "Open".

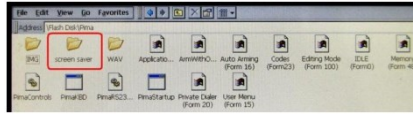


Figure 11.

- From the menu, click "Edit" -> "Paste". The two images should now be pasted and replace the current images (if there are any yet).
- Close the opened windows.
- Restart the keypad. The new images should appear the next time the screensaver will run.

Limited Warranty

PIMA Electronic Systems Ltd. does not represent that its product may not be compromised and/or circumvented, or that the Product will prevent any death, personal and/or bodily injury and/or damage to property resulting from burglary, robbery, fire or otherwise, or that the Product will in all cases provide adequate warning or protection. The User understands that a properly installed and maintained equipment may only reduce the risk of events such as burglary, robbery, and fire without warning, but it is not insurance or a guarantee that such will not occur or that there will be no death, personal damage and/or damage to property as a result.

PIMA Electronic Systems Ltd. shall have no liability for any death, personal and/or bodily injury and/or damage to property or other loss whether direct, indirect, incidental, consequential or otherwise, based on a claim that the Product failed to function.

Please refer to a separate warranty statement found on PIMA website at: <http://www.pima-alarms.com/site/Content/t1.asp?pid=472&sid=57>

Warning: The user should follow the installation and operation instructions and among other things test the Product and the whole system at least once a week. For various reasons, including, but not limited to, changes in environment conditions, electric or electronic disruptions and tampering, the Product may not perform as expected. The user is advised to take all necessary precautions for his/her safety and the protection of his/her property.

This document may not be duplicated, circulated, altered, modified, translated, reduced to any form or otherwise changed; unless PIMA's prior written consent is granted.

All efforts have been made to ensure that the content of this manual is accurate. Pima retains the right to modify this manual or any part thereof, from time to time, without serving any prior notice of such modification.

Please read this manual in its entirety before attempting to program or operate your system. Should you misunderstand any part of this guide, please contact the supplier or installer of this system.

Copyright © 2017 PIMA Electronic Systems Ltd. All rights reserved. E&OE.

PIMA Electronic Systems Ltd.,

WWW.PIMA-ALARMS.COM

5 Hatzoref Street, Holon 5885633, Israel

Tel: +972.3.650.6414

Fax: +972.3.550.0442

E-mail: support@pima-alarms.com

P/N: 4410326



Revision: B1, XX en, Mar 2017