

USB Modem for the COMAX application Installation Guide

This USB modem will enable to connect a PC/laptop with PIMA's COMAX upload/download application, over a PSTN line, to any PIMA intruder alarm system.

The modem has USB interface on one side, and RJ-11 on the other.

Two LEDs supply indications for power and data exchange.

The modem's initialization string is printed on the modem's sticker.

CONTENT OF THE PRODUCT PACKAGE

- The modem;
- RJ-11 phone cable;
- Driver installation CD;
- This guide.

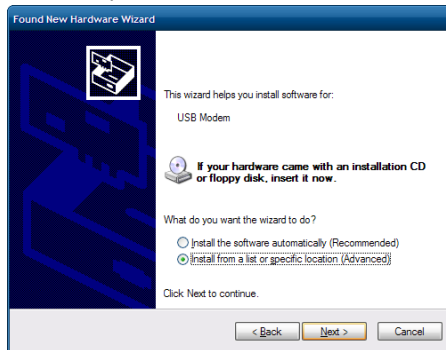


INSTALLATION

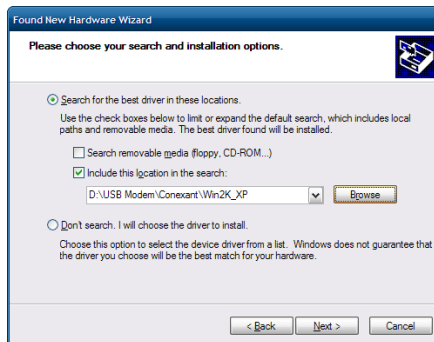
- 1) Connect the modem to a phone jack using the supplied phone cable.
- 2) Insert the USB plug to a USB port in the PC/laptop.
- 3) In Windows® systems other than Windows 7®, wait for the "Found new hardware wizard" to start. If the wizard does not start automatically, go to Start->Control Panel and double-click on "Add hardware";
- 4) In Windows 7® installation is automatic. When it finishes, a pop-up window with the message "Your device is ready to use" is displayed.
- 5) In the first wizard screen, click "No, not this time".
- 6) Click "Next".



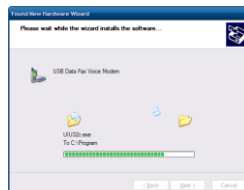
- 7) Click "Install from a list or specific location".



- 8) Click "Next";
 9) Insert the installation disc to the CD drive and wait for the installation wizard to start. If it does not run automatically, see paragraph "12".
 10) Check "Include this location in the search:".
 11) Click "Browse" and point to the CD drive.
 12) Double-click the file "Setup.exe", located in "USB modem" -> "Conexant" -> your Windows OS version ->



- 13) Click "OK".
 14) Click "Next";
 15) Wait for the installation process to finish.



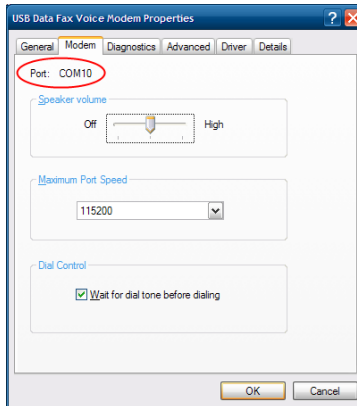
- 16) Click "Finish". The modem is now installed.

PROGRAMMING THE MODEM IN THE COMAX

Finding out the modem's COM port number

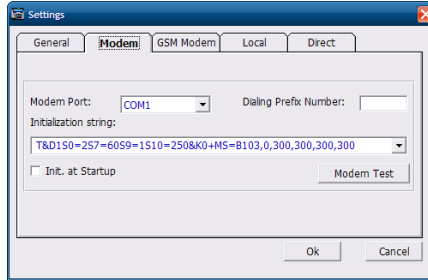
To program the modem in the COMAX, you need to know the COM port it was assigned to. To do so, follow the next steps:

- 1) Right-click "My Computer" on the desktop and select "Manage";
- 2) In the pop up window, on the left pane, click "Device Manager";
- 3) On the right pane, double-click "Modems";
- 4) Under "Modems", right-click on "USB Data Fax Voice Modem" and select "Properties";
- 5) Click the "Modem" tab. The COM number appears on the top. See the next figure.



Setting the modem's properties

- 1) In the COMAX, click "Tools" -> "Settings" and click the "Modem" tab.
- 2) From the "Modem Port" drop-down list, select the Modem's COM port. See the next figure.
- 3) Verify that the modem's initialization string matches the one printed on the modem's sticker.
- 4) If the phone is connected over a switchboard or phone system, fill in the prefix number.
- 5) To initialize the modem on startup (instead of doing it only when establishing a connection), check "Init. at startup".
- 6) Press the "Modem test" button and wait for the message "Modem setting is successful" to be displayed.
- 7) Click "OK".



LEDs

RED: POWER
GREEN: DATA



Current consumption

Transmitting: >50mA Idle: >0.5mA

This document may not be duplicated, circulated, altered, modified, translated, reduced to any form or otherwise changed; unless PIMA's prior written consent is granted. All efforts have been made to ensure that the content of this guide is accurate.

PIMA retains the right to modify this guide or any part thereof, from time to time, without serving any prior notice of such modification.

Please read this guide in its entirety before attempting to program or operate your system. Should you misunderstand any part of this guide, please contact the supplier or installer of this system.

Copyright © 2012 by PIMA Electronic Systems Ltd. All rights reserved.

PIMA Electronic Systems Ltd
5 Hatzoref St., Holon 58856
ISRAEL

Tel: +972.3.6506414

Fax: +972.3.5500442

Email: support@pima-alarms.com

Web: www.pima-alarms.com

P/N 4410361



Version A1, XX en (Feb. 2012)